

Solis-4200-MV

Solis MV Station

For 1500 V string inverter Solis (125-255)K and (250-350)K

Integrated delivery

- Mainstream 4.2MW subarray, widely used globally
- 20 foot standard container delivery, easy to transport

Reliable products

- LV busbar, transformer and MV cabinet be placed independently
- Adopt international first-line brand equipment with reliable quality

Convenient installation

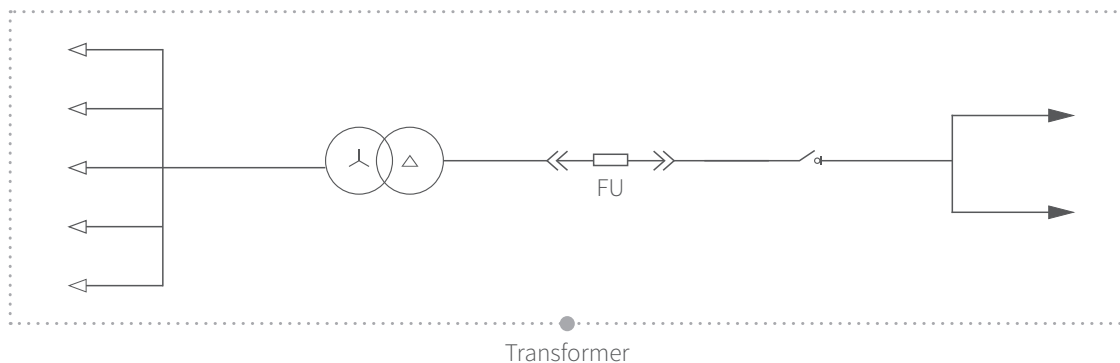
- A complete solution, from inverter to main step-up transformer
- When the MV station is lifted to the foundation, only LV and MV cables need to be connected

Easy O&M

- Full frontal maintenance design
- Modular design of MV equipment, easy to replace



● Circuit diagram



DATASHEET

Models	Solis-4200-MV
LV panel	
MCCB specification	250 A / 800 Vac / 3P, 18 pcs
ACB specification	4000 A / 800 Vac / 3P, 1 pcs
Connection form with transformer	Copper busbar
Transformer	
Transformer type	Oil immersed
Rated output power	4200 kVA @ 40°C
Max. output power	4620 kVA @ 30°C 3h
LV / MV voltage	0.8 kV / 34.5 kV
Max. input current	3312 A
Tapping on HV	±2 × 2.5%
Vector group	Dy11
Frequency	60 Hz
Cooling type	ONAN
Impedance	7%
Oil type	Mineral oil (plant oil optional)
Winding material	Al / Al (Optional: Cu / Cu)
Insulation class	A
Protection	
LV surge protection	AC type I + II
AC input protection	Circuit breaker
AC MV output protection	Load switch + Fuse
Transformer protection	Oil-temperature, oil-level, oil-pressure
Fire protection	emergency lighting
General Data	
Dimensions (W × H × D)	6058 × 2896 × 2438 mm
Approximate weight	20 T
Operating ambient temperature range	-13°F to 140°F (-25°C to 60°C)
Max. operation altitude	1000 m (standard)
Auxiliary power supply	5 kVA / 240 V (Optional: max. 30kVA)
Degree of protection	IP54
Allowable relative humidity range	0 - 95%
Communication	RS485, Ethernet, Optical fiber
Compliance	IEC 60076, IEEE C57