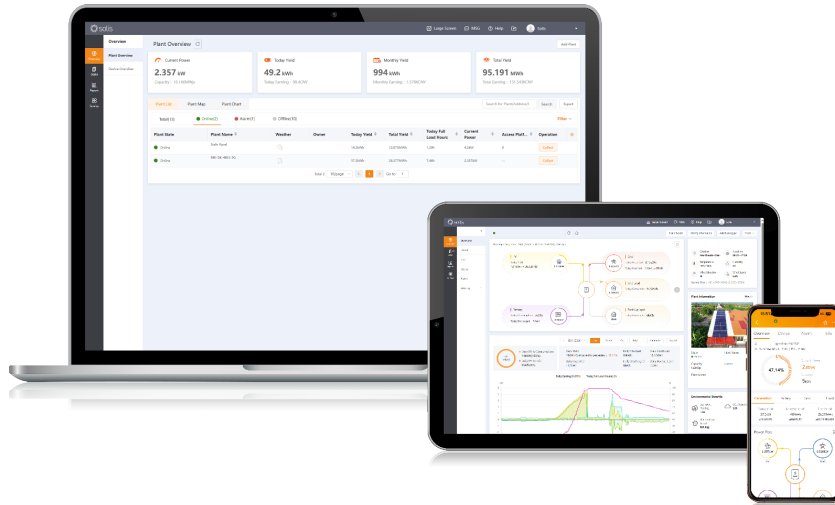


SolisCloud

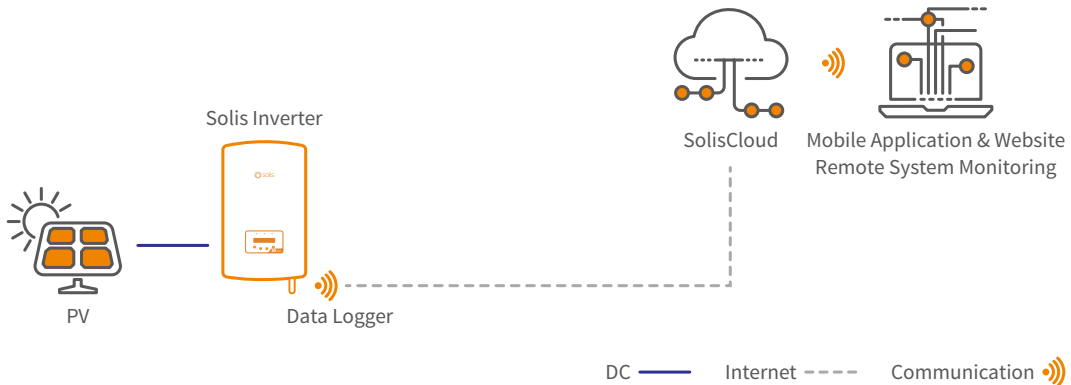
Remote and Intelligent Control at Your Fingertips

SolisCloud is the new generation of intelligent PV system monitoring. This new monitoring platform will empower you like never before. You will have full control of your system whenever and wherever you are. Remotely manage, troubleshoot, measure performance or even shut down your PV system for ultimate control.

Simplify your operations and maintenance with the ability to visualize all your installations with real-time, actionable data. The SolisCloud intelligent alarm system gives resolution recommendations and the ability to troubleshoot system faults. Understand the health of all of your systems with in-depth analytics, live battery and inverter performance flow data and remote IV curve scanning. Complete control coupled with actionable data helps you to ensure systems are always on and performing as expected.



Intelligent Monitoring Solution - SolisCloud



Remote Control & Capability

- Remotely update firmware or troubleshoot, potentially saving a site truck roll.
- Remote shut off increases safety if the system is having a critical error.
- Control battery reserve for inclement weather or planned power outage , set time of use (TOU) charge and discharge to offset rates, as well as export power control.

Multiple Site Management

- Manage multiple types of systems across commercial, residential and utility scale plants.
- Enable teams with unique access permissions.

Streamlined Operations & Maintenance

- System managers are notified of potential issues and resolution measures to limit downtime.
- Intelligent and granular string-level monitoring to maximize performance.

Software-enabled Shade Mitigation

- Our inverter's software intelligently combats shade situations without the use of hardware. This enables the identification of the highest performing module in a string to ensure maximum output.

Accessories available:

- | | |
|------------|------------|
| S2-WL-ST | S2-RF-LINK |
| S5-WiFi-ST | S3-Logger |
| S1-W4G-ST | MB-S4-W4 |
| S3-GPRS-ST | |

